

Maple Square



Experience the renaissance of Nassau County and the excitement of Manhattan when you live in the luxurious Maple Square Town Homes. Maple Square provides luxury townhomes located across from the New Village Park in the heart of the Village of Westbury. Each town home comes with 2 bedrooms, 2 baths, a loft, a private balcony and a 2 car garage. Standard features include granite countertops, quality Anderson windows, oak flooring and Kohler kitchens.

The Maple Square Town Homes are conveniently located in the heart of Nassau County, nestled in the heart of the Village of Westbury. Minutes away you will find:

- Jones beach and Eisenhower Park
- Upscale shopping at The Source and Roosevelt Field
- Fabulous dining, endless gourmet restaurants and nightlife
- The North Fork Theatre for your entertainment pleasure
- The Nassau Coliseum where you can enjoy numerous concerts, sporting and other events
- Concerts under the stars at the Jones Beach Theatre
- Golf Clubs
- Experience the breathtaking Old Westbury Gardens and Planting Fields Arboretum
- Expand your horizons at SUNY Old Westbury, which offers flexible study options

Maple Square Town Homes are 2 blocks from the Long Island Railroad and 35 minutes to Manhattan. The community is walking distance to the quaint downtown Village of Westbury and accessible to major highways including the Long Island Expressway, Northern State Parkway and Old Country Road.



About The Village of Westbury



The Village of Westbury, dubbed "The Community for all Seasons," celebrated its 75th Anniversary in 2007. Working together, residents and elected officials have completed a 7-year revitalization program. The Village of Westbury wonderful community gatherings, fairs and concerts, a beautifully renovated and modern downtown area, an A-1 credit rating, a Village Community and Recreation Complex, a newly dedicated Village Square, and beautiful, new residential communities. The Village of Westbury has, once again, become a premier place to live and work on Long Island, in the heart of Nassau County.



Enjoy the Walkable Village of Westbury's fine dining establishments, Village Square, and wonderful amenities.



Maple Square FEATURES



ELEGANT INTERIOR

#1 oak in dining room and kitchen

9' ceilings on main floor

Vaulted ceilings in master bedroom & 2nd bedroom

Walk in bay window in living room and master bedroom

Wall to wall carpet in living room, bedrooms & mezzanine

Master bedroom suite with walk in closet and private bath

Raised panel interior doors

Separate GE washer & gas dryer

DISTINCTIVE KITCHENS

Granite countertops

Maple cabinetry

G.E. self cleaning range

G.E. dishwasher

G.E. microwave

G.E. side by side refrigerator

APPOINTED BATHROOMS

Kohler bath fixtures

Ceramic tile floors

5' shower in master bath

Elongated toilet

Maple cabinetry

EXCEPTIONAL FEATURES

Separate entryway

Anderson slider door on to private balcony with composite decking

Spacious & bright mezzanine

2-car garage w/ remote control

QUALITY FEATURES

R-13 insulation in exterior walls & R-30 in ceiling

Energy efficient gas heat & central air conditioning

Anderson windows low "e" glass

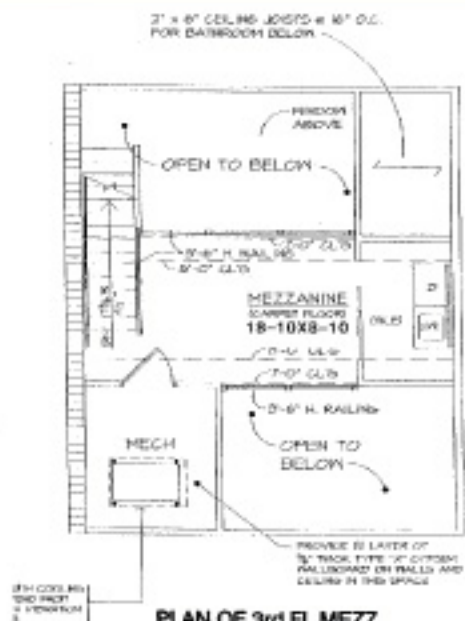


PLAN OF 2nd FLOOR

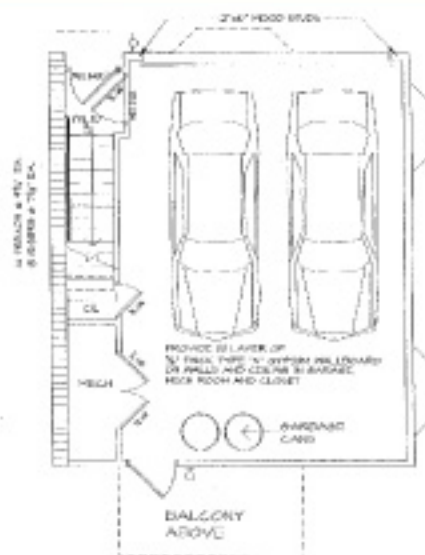


PLAN OF 3rd FLOOR

101



PLAN OF 3rd FL MEZZ



PLAN OF GARAGE LEVEL - 1st FL